



RAVIZZA PACKAGING USA

bagging machines

**VIBRATORY FEEDERS
HANDLING & LOADING SYSTEMS**

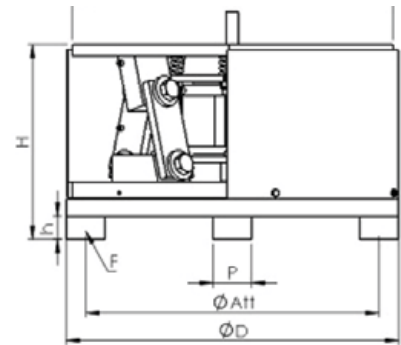
VER 1.0
ENG

www.ravizzausa.com

VIBRATORY BOWLS

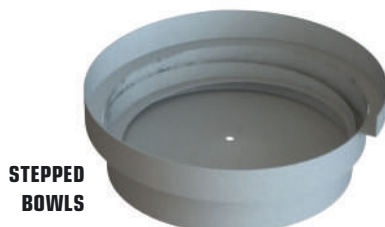
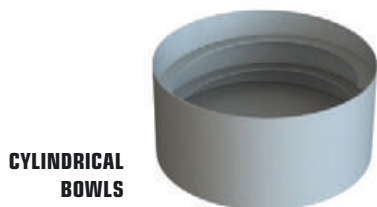
Ravizza Packaging presents Europe's leading Vibratory Bases catalogue. All components are certified and Made in Italy.

| BASES MOD. | DIMENSIONS (IN/MM) | | MAGNETS | BASE WEIGHT (lb) | MAX. CONSUMPTION (110V/50HZ) A | PERIODS V / M |
|------------|--------------------|------------|---------|------------------|--------------------------------|---------------|
| | D | H | | | | |
| BV15- 2 | 6 / 152 | 5 / 127 | 1 | 20 | 1,2 | 6000 |
| BV25- 2 | 10 / 254 | 8 / 203 | 1 | 44 | 2,2 | 6000 |
| BV35- 2 | 13 / 330 | 9 / 229 | 1 | 110 | 3,2 | 6000 |
| BV45- 2 | 17 / 432 | 10 / 254 | 1 | 176 | 4,8 | 6000 |
| BV45- 1 | | 11 / 280 | | 231 | 3,6 | 3000 |
| BV46- 2 | 18 / 457 | 9,5 / 241 | 3 | 205 | 4,2 | 6000 |
| BV46- 1 | | 9,5 / 241 | | 205 | 5,4 | 3000 |
| BV55- 1 | 20 / 508 | 11 / 279 | 1 | 320 | 3,6 | 3000 |
| BV56- 2 | 20 / 508 | 11 / 279 | 3 | 331 | 9 | 6000 |
| BV65- 1 | 23 / 584 | 12 / 304 | 1 | 507 | 6 | 3000 |
| BV66- 1 | 23 / 584 | 12 / 304 | 3 | 562 | 12 | 3000 |
| BV75- 1 | 30 / 762 | 12,5 / 317 | 3 | 661 | 14 | 3000 |
| BV85- 1 | 35 / 889 | 19 / 483 | 3 | 1389 | 19,8 | 3000 |



- Low maintenance
- Products and parts in stock for quick delivery"
- Easy calibration and frequency setting
- Electromagnets designed for high performance.
- Leaf springs are based on high-strength fiber composite materials and certified.
- Integrations available with: Bowls, fixed or variable frequency, analog or digital controls.

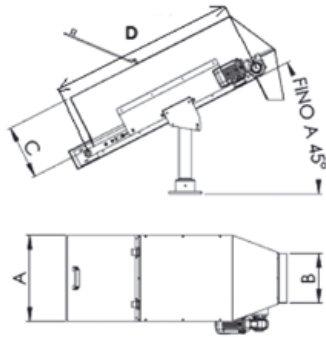
INTEGRATIONS AVAILABLE



LOADING SYSTEMS



- Elevator Hoppers are used to move the parts to be processed to the desired height
- Large loading capacities and made of 304 - 316 Stainless Steel
- Low maintenance
- Designed for heavy duty and continuous operation guaranteeing reliability and high performances.



| BASES MOD. | HOPPER CAPACITY (FT ³ / l13) | STANDARD DIMENDIONS (IN / MM) | | |
|------------|---|-------------------------------|----------|----------|
| | | A | B | C |
| CAR-25 | 1 / 28 | 13 / 330 | 9 / 230 | 9 / 230 |
| CAR-50 | 2 / 57 | 22 / 560 | 13 / 330 | 11 / 280 |
| CAR-75 | 2,5 / 71 | 22 / 560 | 13 / 330 | 13 / 330 |
| CAR-100 | 3,5 / 99 | 25,5 / 648 | 17 / 430 | 13 / 330 |
| CAR-150 | 5 / 141 | 25,5 / 648 | 17 / 430 | 15 / 380 |

INTEGRATIONS AVAILABLE

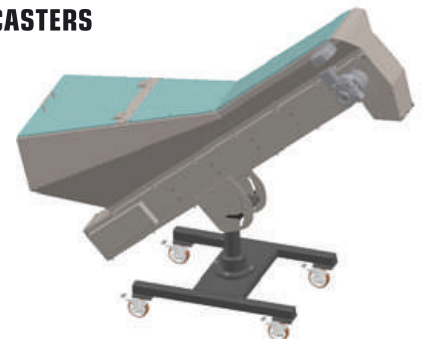
CHAIN ELEVATORS
available for
5, 9 or 17 ft³



ELEVATOR COMPLETE WITH SUPPORTING FRAME

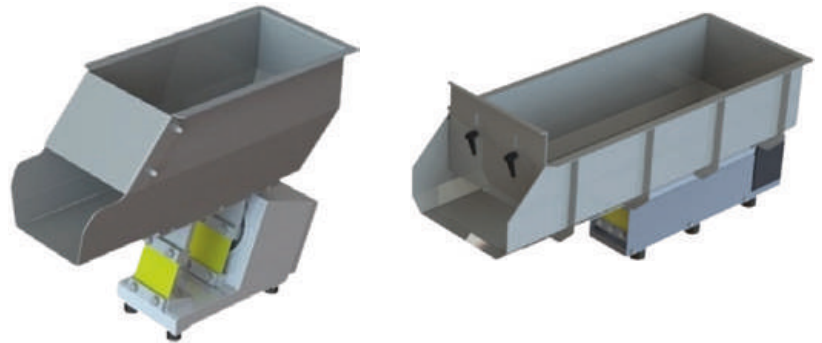


ELEVATOR COMPLETE WITH LOCKING CASTERS

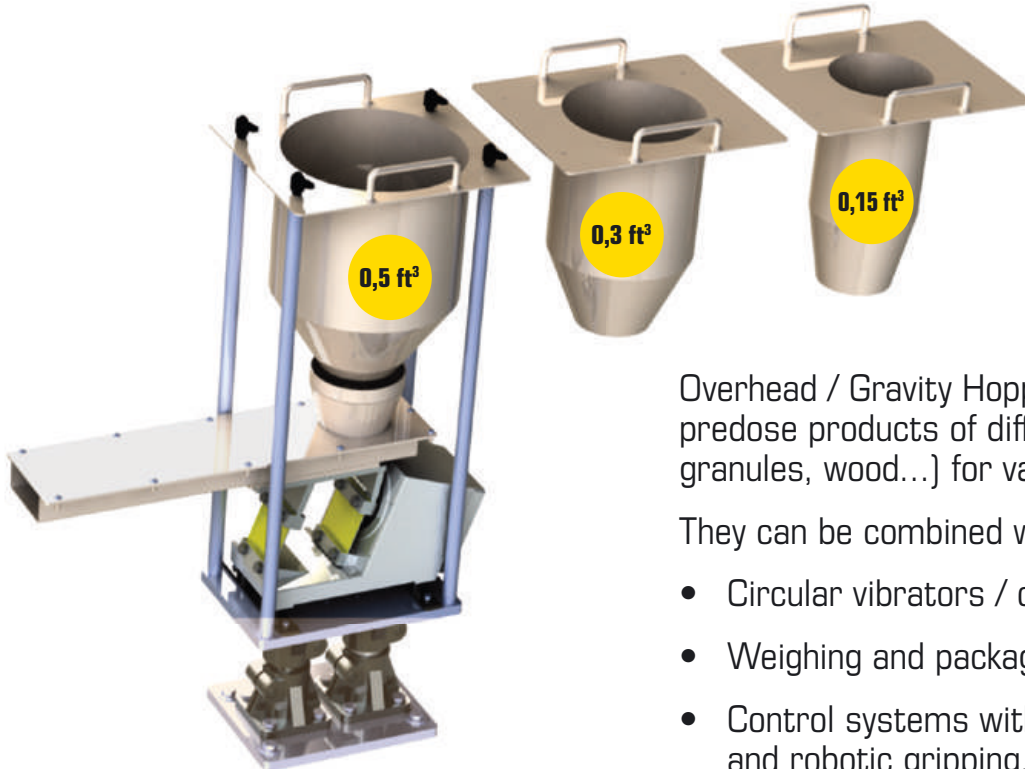


VIBRATORY HOPPERS

- Range from 25 lt. (6 gal.) to 500 lt. (132 gal.)
- Easy calibration and maintenance
- Integrations with most automated packing lines
- Certifications available: FDA/UL/Atex



INTEGRATIONS



Overhead / Gravity Hoppers are used to convey and predose products of different materials (metal, plastic, granules, wood...) for various industries.

They can be combined with:

- Circular vibrators / conveyor belts.
- Weighing and packaging systems.
- Control systems with vision and robotic gripping.

